



ANNUAL MEETING ENTERTAINER

Jessica Schable is a voice and piano instructor with 18 years experience in music education. Jessica is co-founder and Academy Director of Okoboji Performing Arts, an area nonprofit organization dedicated to enriching and encouraging performing arts educational opportunities in the Iowa Great Lakes area. She is known throughout the area for her proficient piano skills accompanying an array of local community and school ensembles. She owns and operates Jessica Schable Music Studio in downtown Milford catering to over 60 students in both voice and piano. Jessica is the music director for Okoboji Music Masters, an area community choir, as well as choir director at Grace United Methodist Church in Spencer.



ENTERTAINMENT PROVIDED BY:
JESSICA SCHABLE



BURGERS GRILLED BY:
CLAY COUNTY CATTLEMEN

ANNUAL MEMBERS MEETING

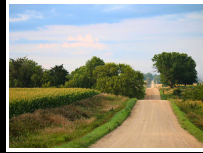
The ILRW Annual Members Meeting will be held on Tuesday, July 30, 2024, at our district office located at 1301 38th Avenue West in Spencer, Iowa. A complimentary meal will be provided beginning at 5:00 PM. The Clay County Cattlemen will be grilling and a variety of vendors have donated door prizes to be drawn around 6:30 PM. The business meeting will follow at 7:00 PM. There are two director positions available for election (see page 3 for the Nominating Committee Report). To vote, please complete and return the enclosed Proxy Ballot on page 4 by 12:00 PM on Tuesday, July 30, 2024. Election results will be announced at the end of the evening's events.

Projects & Partnerships



Royal Residents

In 2023, residents in the city of Royal became members of ILRW, thanks to the great partnership the City made with the District. We'd like to acknowledge all of the Royal residents for their patience and cooperation during this transition.



Rural Growth

During the last expansion project, we installed over 140 new customers in our existing service area. This Spring, we received federal funding to aid a new expansion project with the goal to bring water to 96 plus new customers. New services are comprised of new builds and families with unsafe wells that are either contaminated or have failed. These individuals are eager to enjoy the very services you already do!



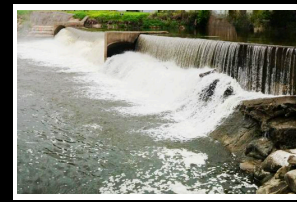
Water Capacity Redundancy & Resiliency

During the last expansion project mentioned above, ILRW completed construction of a booster station, as well as 3 distribution system loops to improve hydraulics for our customers in areas with a high potential of low pressure. These loops provide our licensed operators the ability to minimize the number of services without water during an outage. Operators continue to maintain and improve water towers, boosters, pipelines, and wells.



City of Mallard

The City of Mallard has partnered with us to supply water to their community. To connect to our system, 17 miles of mainline will be installed. The City is currently under a consent decree with IA DNR for a new water source, ILRW has committed to helping the City with their needs. This expansion will also provide opportunities to serve other rural residents and businesses in the area.



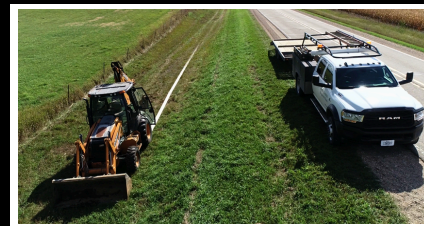
City of Linn Grove

The City of Linn Grove has partnered with us to supply water to their community. We are excited to serve residents and businesses. The City received Federal assistance through USDA Rural Development to aid in funding the project.



Orleans Residents

The City of Orleans has also partnered with us on their water distribution system. ILRW is currently operating the system with the intent to serve Orleans with our water source. A mainline extension will be required to serve Orleans and is expected to be financed through the State Revolving Fund. We look forward to welcoming them as members once the connection is made.



Webb Residents

The City of Webb and ILRW are working on a partnership for their water distribution system. ILRW currently operates their wastewater system while assisting with their water distribution operations and billing needs. We are working with USDA on a funding package to upgrade the distribution system for their community.

NOMINATING COMMITTEE REPORT

The ILRW Board of Directors has been dedicated to the progress and sustainability of the District since 1976. The Board of Directors elections is part of the Annual Members Meeting held in July. This year, the Nominating Committee proudly supports the election of Adam Batschelet to his first three-year term, as well as Janeen Ruby for election to her first three-year term, after previously fulfilling a vacant seat on the ILRW Board of Directors.

MEMBERS CAN VOTE BY PROXY ON PAGE 4

Adam Batschelet married Abbey Biedenfeld in 2020. They have a 3 year old daughter Jaelyn and just welcomed their second daughter, Reese, in April. Abbey teaches second grade at Fairview Elementary in Spencer, Iowa. Adam is going on his fifth year working in Construction Project Management at RP Constructors LLC based out of North Sioux City, South Dakota. He manages their Northwest Iowa construction projects.

Both of Adam's parents grew up in the Royal area. Adam was born in Germany, while his father served a lengthy and successful career in the U.S. Army. After a childhood spent moving around the country, his entire family eventually reunited in Iowa. His parents currently reside in Spencer, and his sister and brother-in-law live in Des Moines. Adam has a bachelor's degree in Agricultural Business from Iowa State University.

Adam is the President of the Clay County Community Foundation, where he has served on the board for the past two years. He enjoys volunteering and strongly believes it is important his family contributes their time and energy into the community.

He enjoys farming with his father in southern Clay County during his free time and spending time with his family at their lake home in Okoboji, Iowa.



*Adam Batschelet
First term Candidate*



*Janeen Ruby
First term Candidate*

Janeen is married to Dan Ruby and they have one daughter. They live in Jackson County, Minnesota, just 1 mile north of the Iowa border. She and her husband own a property with 90 acres of reconstructed prairie and wetland; 75 of those acres are in a Wetland Bank easement. They homeschool their daughter and participate in Jackson County 4-H as members and volunteers. Their hobby farm has chickens, horses, dogs, and a large garden. In her professional career, Janeen worked for the Minnesota DNR as a Plant Ecologist with the Minnesota Biological Survey and did similar work for Wisconsin DNR previous to that. Prior to working in Wisconsin, she worked for the Missouri Conservation Department. She has experience in natural resource management, inventory, and monitoring. She has also worked on prairie restoration, prescribed burns, and exotic species control. She has a deep passion for plants, animals, and wildlife.

Janeen has a B.A. in Environmental Studies from Gustavus Adolphus College, and a M.S. in Biology from Illinois State University. She has pursued many continued education training courses throughout her career.

PROXY BALLOT

BOARD MEMBER ELECTION

Two Board positions are available

Please vote for 2 candidates

☐ Janeen Ruby

☐ _____
(write in)

☐ Adam Batschelet

☐ _____
(write in)

Traeger Wood Pellet Grill Smoker
\$500 value



PROXY PRIZE

NEED NOT BE PRESENT TO WIN

Ballot must be received by 12:00 PM on
Tuesday, July 30, 2024, to be eligible to win.

PLEASE PRINT

Your name, account number and signature must be present and legible on the ballot to be eligible to vote and be entered for the proxy prize drawing.

I, _____ (name), a participating member of Iowa Lakes Regional Water, _____ (account number), appoint the Secretary of the Iowa Lakes Regional Water Board of Directors, as my Proxy, to cast my vote for election of directors for the candidates designated above, and to vote on all other matters that may properly come before the meeting on July 30, 2024. This appointment confers all power and authority that I would possess if personally present.

Member Signature: _____



☐ YES! I plan to attend
of guests _____

☐ NO, I do not plan to attend

PLEASE RETURN THIS BALLOT TO
IOWA LAKES REGIONAL WATER
NO LATER THAN JULY 30, 2024



MAIL TO:

ILRW
PO BOX 555
SPENCER, IA 51301

ILRW USE ONLY
FOR COMPLETION BY
SECRETARY'S DESIGNEE

Member Account Number: _____

Membership Valid:

☐
YES

☐
NO

ECO-FRIENDLY

using less paper reduces your environmental footprint. *Go Green!*

ON THE GO CONVENIENCE

easy to manage from anywhere



AFFORDABLE

by affordable, we mean FREE!
No stamps and less worry

SECURITY

safely manage your secure account and prevent identity theft from potential stolen mail

visit www.xpressbillpay.com for more info

5 STEPS FOR SAFE DIGGING

Working on an outdoor project?
Always call 8-1-1 first, you never know what's below.



NOTIFY

Call 8-1-1 or make a request online two or three days before you start.
(Excluding weekends)



WAIT

Wait the required time for a response to your request. Affected utilities will send a locator to mark any underground lines.
(may exclude private lines)



CONFIRM

Confirm that all affected utilities have responded by comparing the markers to the list of utilities the 8-1-1 call center notified.



RESPECT

Respect the markers provided by the affected utilities. They are your guide for the duration of your project.



DIG CAREFULLY

If you can't avoid digging near the markers (within 18-24 inches on all sides dependent upon state laws), consider moving your project.

METER PIT ACCESS

ILRW would like to remind you that per our policy, only trained and certified ILRW personnel are allowed to access the meter pit and curb stop. The meter pit and curb stop are owned and maintained by ILRW. We strive to keep our customers and their contractors safe.

Our service technicians are on-call 24 hours, 7 days a week. The emergency number can be obtained by calling our office and pressing 2 during the voicemail process.



DO report any damaged, broken or missing lids



DO keep area clean for accessibility



DO notify us of suspicious activity



DON'T allow others to access meter pits on your property



DON'T build or plant over meter pits



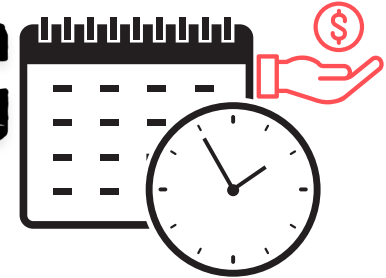
DON'T attempt to access meter pits yourself

YOUR COOPERATION IS APPRECIATED!

Thank you



AUTOMATIC Withdrawal



Iowa Lakes Regional Water

VS.

Xpress Bill Pay

- Complete a form and return it with a voided check (located on our website or requested via phone)
- Withdraws on due date (or next business day if due date on weekend/holiday)
- No convenience fee charge

- Online sign up through xpressbillpay.com
- Withdraws monthly on any date you choose
- Ability to use bank account or card of choice
- Convenience fee charge per transaction (\$1.49/check and \$3.50/card)

Our Purpose

Our Vision

Strive for excellence in the products and services delivered to our current and future customers while enhancing the quality of life through innovation, dedication, and integrity.

Our Mission

Serve as a regional utility providing safe, reliable and economical water and wastewater services to Northwest Iowa and Southwest Minnesota.

Our Core Values

OUR VALUES

SAFETY

INTEGRITY

RELIABILITY

ECONOMICAL



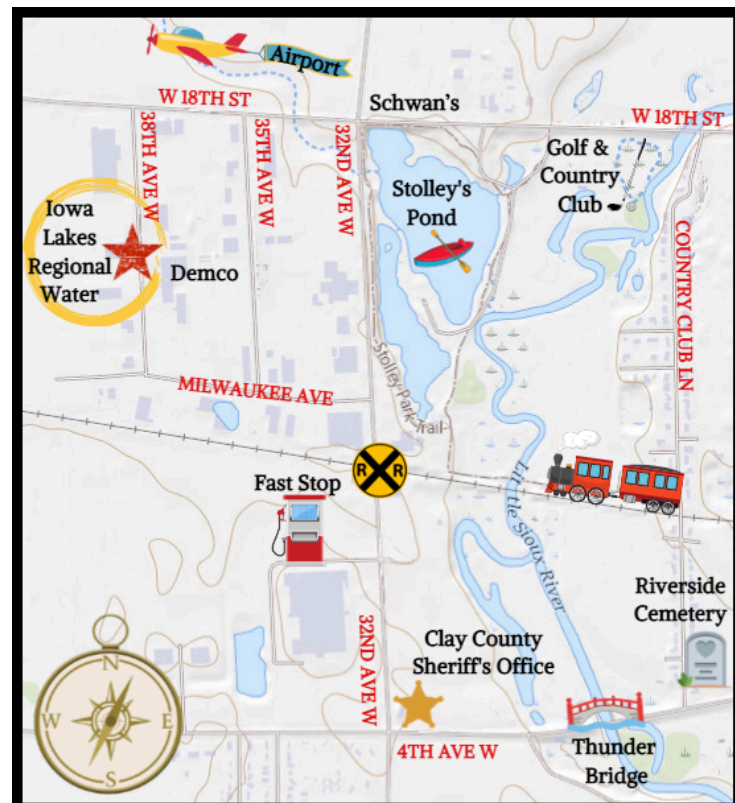
COMMUNICATION

We challenge our employees to embrace these values in everything they do.

Iowa Lakes Regional Water is dedicated to meeting a new standard of who we say we are, what we do, and why we do it. It is intentional that our vision statement and core values reflect our organization and the elevated level of commitment we provide to our customers.

As our customer you can rely on us to provide dependable service every day, including emergency situations. When your water or wastewater service causes an unintended interruption in your day, we understand what you are going through and will be there for you! Please don't hesitate to call us, we are available 24 hours a day, 7 days a week. It is our privilege to provide you with the confidence that we will take care of your service, handling the details with expert technicians. Know that we are performing our best to give you reliable, quality water that meets and exceeds IDNR & EPA's regulations. We work hard to keep you, your family, the community where you live, and the environment safe. Striving for excellence in all we do enhances your quality of life through the products and services we are proud to provide and deliver to you.

**Iowa Lakes Regional Water - 1301 38th Avenue West
Spencer, Iowa 51301**



712-262-8847

www.ilrw.org

member.services@ilrw.org



Office Hours:
Monday - Friday
8 AM - 4 PM